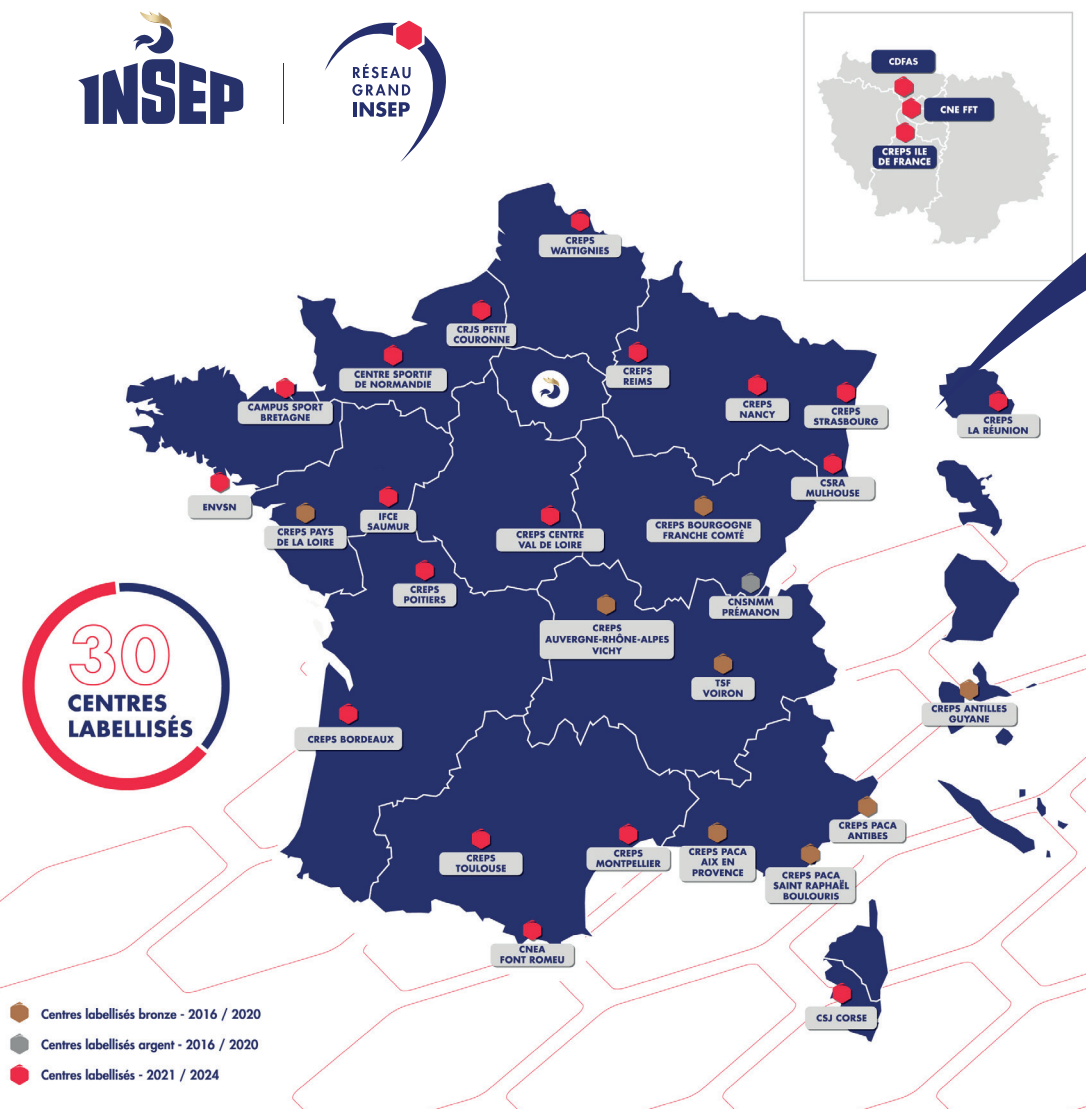




The grand INSEP network is a real asset for French elite sport. Thanks to an impressive territorial grid, diversity of knowledge, and experience sharing, Grand INSEP's certified centres provide concrete and efficient solutions to sport federations, highly qualified staff, and Olympics and Paralympics high potential athletes. Now aiming at the 2024 Paris Olympics, our purpose remains the same: urging data collecting, mutualization of tools, and connection of necessary resources, in order to succeed in the Olympics and Paralympics. To that extent, we commit ourselves to keep on supporting and raising up our performance offer in each centre, and improving our staff' skills.

Fabien CANU
Chief Executive Officer



THE GRAND INSEP NETWORK

Our commitment is to offer to all HP athletes a vast range of support services "wherever they live, practice and prepare to achieve medal performances".

Babak AMIR-TAHMASSEB

Director
International relations and grand INSEP network Unit
Babak.Amir-Tahmasseb@insep.fr

Howard VAZQUEZ

Head of grand INSEP network
Howard.Vazquez@insep.fr

www.insep.fr/en/grand-insep-network -



THE "GRAND INSEP", A NATIONAL NETWORK FOR ATHLETES AND COACHES

NETWORK ACTIVITY

The grand INSEP (GI) is a national training centre network dedicated to athletic performance covering the entire French territory. The network aims to provide high performance solutions for both athletes, coaches and support staff.



COLLABORATIVE DYNAMIC

To strengthen cooperation amongst the highlevel partners.



SHARE EXPERTISES

Mobilize all ressources to support sport performance.



NETWORKING

Federate and increase network collaboration as well as stimulate the progress of the training center network.



CONTINUOUS IMPROVEMENT

Increase stature and competency to bring added value to the network.

A SHARED AMBITION FOR HIGH PERFORMANCE

1 SUPPORTING HP ATHLETES AND THEIR STAFF ON THEIR PATH TO EXCELLENCE

Our certified training centres are dedicated to offering optimal training environnements and educative services to HP athletes as well as their support staff. This is to guarantee an athlete pathway from identification to excellence.

2 EFFICIENCY OF PERFORMANCE TOOLS

Our aim : to facilitate exchanges within the network (workshops, seminars, meetings). In order to respond to NSO's needs, we have developed five fields of expertise : mental performance, physical training, research and innovation, medical & paramedical and socio-professional development.

3 MAKE THE « FRENCH TOUCH » SPORT EXPERTISE SHINE

Our certified centre's expertises are reknown on the french territory. By positioning themselves to become the France Olympic and Paralympic Training Centres (OPTCs) with Paris 2024 perspective, they undertake to make their training centres and services available to other nations.



TOOLS FOR ATHLETIC PERFORMANCE

The actions carried out within the GI network meet specific objectives, guaranteeing a high performance environnement across the territory. Services and operational tools are articulated around 3 axis:

- **GRAND INSEP LABEL**
GI Label is a quality brand that meets high performances criteria. This is a promise made to athletes and NSO's while striving for continuous improvement.
- **DEVELOPMENT AND DIGITAL PLATFORMES**
Digital tools are used to optimize the athlete's tracking. Data collection answers NSO's centres needs.
- **PERFORMANCE SERVICES OFFERINGS**
INSEP and the RGI are deploying an interactive platform entitled "Performance services offer of the Grand INSEP network". This platform is intended to be a catalogue listing all the sports facilities, infrastructures and performance services of the network's centres.
- **MAPPING OF PROFESSIONAL SPORT COLLABORATORS IN HIGH PERFORMANCE**
This digital platform allows an interactive and geo-tracked visualisation of sport collaborators information in high performance. Six fields of expertise are targeted.

www.insep.fr/en/grand-insep-network



OPTIMIZE
HEALTH



HEALTHY
LIFESTYLE



WELL
EDUCATED



OPTIMAL
TRAINING

FOR ALL ELITE ATHLETES

High performance athletes able or disabled and coaching staff.

A SERVICE FOR ALL

A qualitative common offer of infrastructure and services. Proximity and accessibility (In/out).

SPECIFIC FUNCTIONS

Recognized and flexible skills made available to HP athletes.