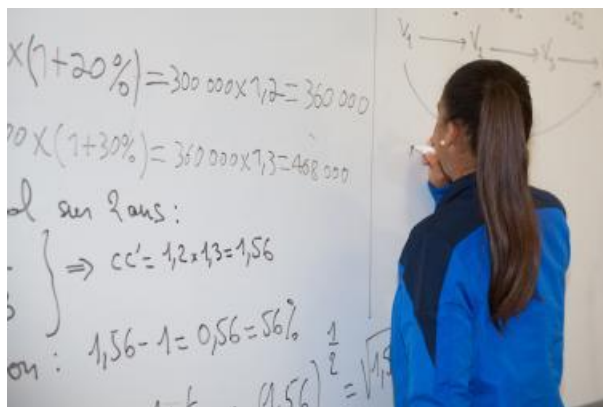


## Elite athletes

*INSEP's elite athletes are entitled to personalised support for school-level, university and professional training.*

Reviews, assessments, definition of projects, from the recruitment campaign stage for potential candidates, liaising with centres from the Greater INSEP network, guidance to find training structures, study placements, adapted educational or professional schedules, giving priority to sports training, access to training materials following absences, exams offered at different locations, distance learning, preparations for competitive entrance exams, help to find employment...Athletes and their support teams are consulted to look into these bespoke arrangements, and they are rethought and improved each day thanks to the dedication, motivation and availability of all of INSEP's agents, especially the academic support teams and the high-performance hub. The training programmes - with around 30 pathways currently available at INSEP or in institutions that have signed agreements with INSEP - are adapted to the schedules of elite athletes. Classes are provided on site and/or as distance learning depending on athletes' availability.



**Secondary education**



**Higher education**



**Professional training**